

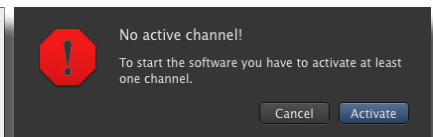
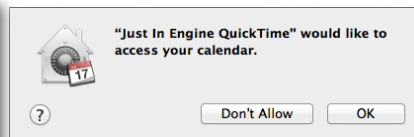
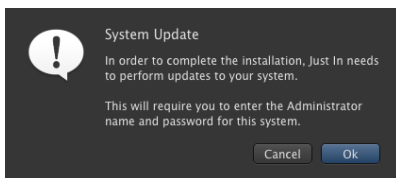
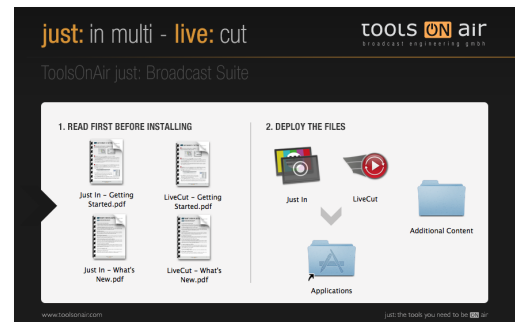
# JUST:IN MULTI 1.7 GETTING STARTED

**1** **Install your video card driver of choice.** For **Blackmagic**: Use the latest Desktop Video driver from the Blackmagic website. For **AJA**: Use the latest <sup>(1)</sup> driver corresponding to the AJA card you are going to use and download it from the AJA website.

**2** **Installation:** Make sure you're running Mac OS X 10.9.2 or higher. Double-click on the DMG installer image and click **Agree** to accept the license agreement. To install **Just In** 1.7 drag and drop the installer icon onto the **Applications** folder.

## For new installations:

- Navigate to the **/Applications/Just In** folder and double-click on **Just In Engine QuickTime** to initialize the software packages. You will be asked to update your system and to allow access to system resources such as Apple Calendar. Confirm all of them by clicking **OK** and by entering your credentials when asked.
- The next step is to activate your channel(s). Click on **Activate** and the **Just In QT** preference pane will open up for you to fine tune your configuration (see Step 3).

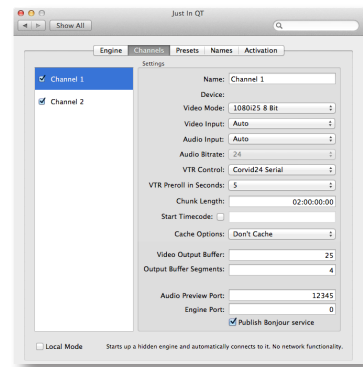


## For upgrade installations ONLY:

- In case of a **previous activation** of any version prior to v.1.7 you will need a **new activation code**. Please contact ToolsOnAir to receive your updated activation code under software maintenance. To perform an upgrade install, you can follow the same steps above. Drag the **Just In** installer package to the **Applications** folder and confirm that you want to replace Just In.
- Navigate to the **/Applications/Just In** folder and double-click on **Just In Engine QuickTime** to initialize the software packages. You will be asked to update your system and to allow access to system resources such as Apple Calendar. Confirm all of them by clicking **OK** and by entering your credentials when asked.
- Your capture presets will be kept as well your channel(s) information. Only the destination presets need to be recreated in the **Just In QT** preference pane in order to reflect the new multiple destinations structure (see Steps 3 and 4).
- Once the upgrade setup is done, restart **Just In Engine QuickTime**, launch **Just In Multi** and connect to the desired channels as always (Continue with Step 9).

**3 Configuration.** Open the MacOSX System Preferences and select the **Just In QT** preference pane under **Other**. Before you can continue please **authenticate** yourself by clicking on **Make Changes** and entering the administrative credentials. In the **Just In QT** preference pane you will see five tabs:

- Under **Engine** select the desired framerate (23.976, 24, 25, 29.97, 30, 50, 59.94 or 60). For all other options, please consult the manual.



- Under **Channels** select the available channels that you would like to use by clicking on the appropriate checkbox and select the appropriate settings for the channel. The available video mode settings for the selected framerate will be displayed automatically.
- The option **Publish Bonjour service** is checked by default. In case that Bonjour cannot be routed in your network, consult the manual for further information on how to run **just:in** multi by using ports and dedicated IP Addresses per channel, as this is the recommended alternative setup. If you would like to preview the audio signal, then enter a port number of choice for every channel selected.

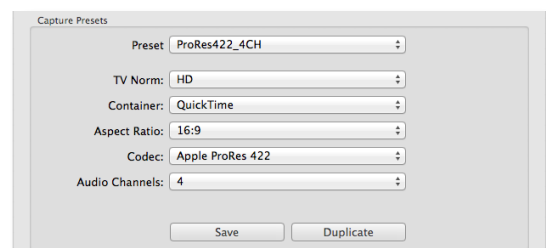
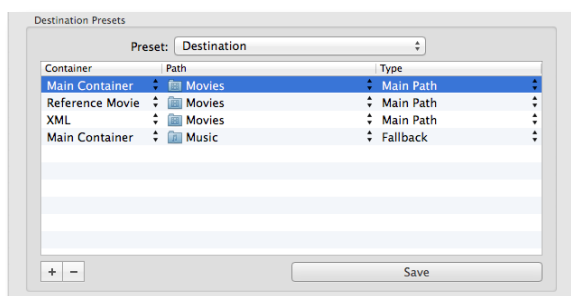
**4** Under **Presets** create a new capture preset (PAL, NTSC, HD or Custom) and a destination preset.

- A **capture preset** consists of the following options:

**TV Norm, Container, Aspect Ratio, Codec** (you need to have the Apple codecs installed previously to see them in the panel) and **Audio Channels** (Mono or Stereo). Once you have defined your preset of choice click **Save** and enter a descriptive name for it. Make sure that you save this preset into **/Library/Application Support/ToolsOnAir/JustIn**.

- A **destination preset** consists of the following options:

**Main Container, Reference Movie or XML** and whether it is a **Main Path** or a **Fallback Path**. In order to get you started, it would suffice to create one **Main Container** entry with type **Main Path**. Click on the “+” button to create a new entry. Under Container select **Main Container**, then the path you want to record to and **Main Path** as Type. Once you have defined your destination of choice click **Save** and enter a descriptive name for it. Make sure that you save this preset into **/Library/Application Support/ToolsOnAir/JustIn**.

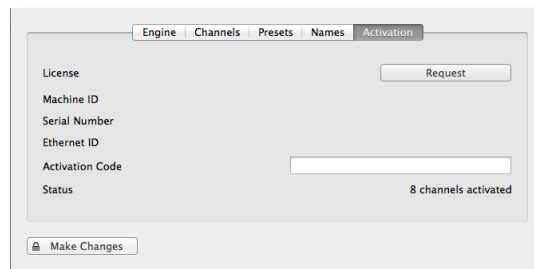


**5** Under **Names** you can define the naming conventions for your clips. You can add your own variables by entering “%” followed by the wanted naming expression. The clips will be named accordingly.

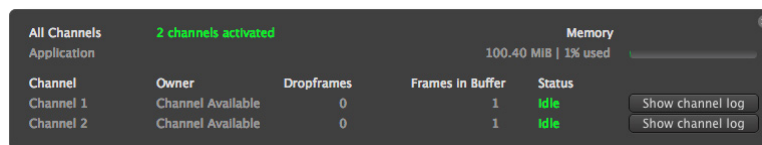
**6** To activate **just:in multi** click on the **Activation** tab and enter an activation key either for demo (without watermarks) or permanent use (licensed) in the **Activation Code** field.

**Please note:**

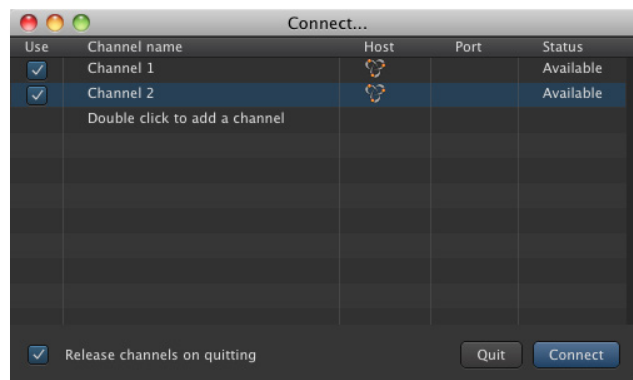
**just:in multi** works in full-featured mode without an activation key! In Trial Mode you will see a watermark every four seconds. Please contact ToolsOnAir to get a temporary activation code that removes the watermark.



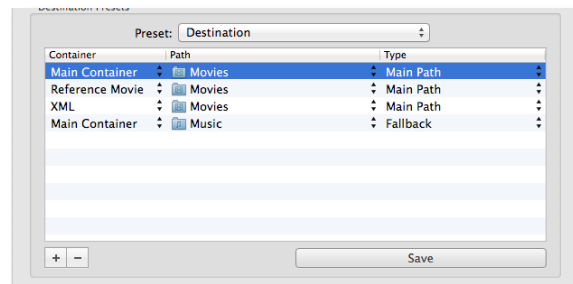
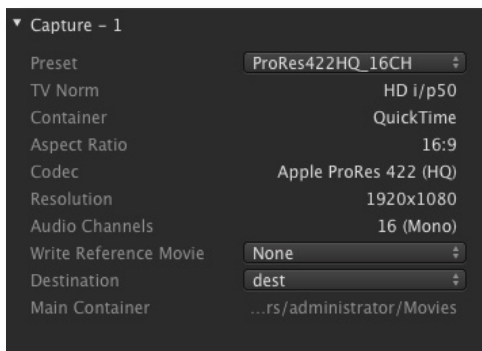
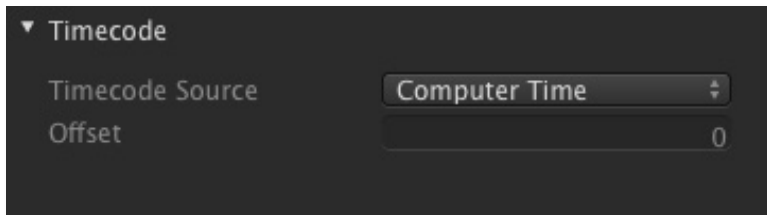
**7** Navigate to the **/Applications/Just In** folder and double-click on **Just In Engine Quicktime**. The engine application will start up and show information about each channel. If asked to access the Calendar API, confirm.



**8** Start the **Just In Multi** GUI (same location as the engine) and select/check the **channel** you wish to control and record on. Check **”Release channels on quitting”** if you want that **Just In Multi** releases the selected channels upon quitting the GUI. Press **”Connect”** to open the user interface.



**9** You are now ready to proceed with your **first recording**. Select the appropriate **Timecode Source** and both **Capture** and **Destination** presets, then press the “**Record**” button. You will now be recording in **Crash mode**.



For further information especially with regard to the installation/deployment of Apple’s professional codecs, please consult the user manual or contact ToolsOnAir support via the support website: <http://support.toolsonair.com>

You can access the User Manual under the **Help** menu of the **Just In Multi** GUI.

Thank you very much for your continued support!

The ToolsOnAir Team

(1) = AJA drivers and **just:in multi** 1.7 compatibility (due to AJA SDK changes):

- **Versions 10.5.x = from just:in multi version 1.7.190 on.**

Information contained in this document is provided without liability for information purposes only and is subject to change without notice.

v1.2– © 2014 ToolsOnAir - Broadcast Engineering GmbH. All trademarks and registered trademarks are the property of their respective owners.