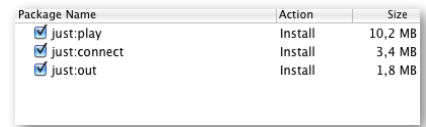


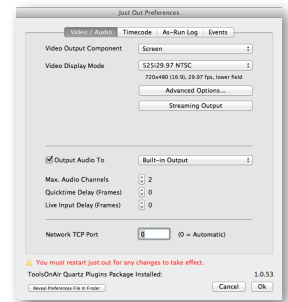
JUST:PLAY FAST SETUP

1 Video device driver installation (skip this step if you have no video device): Download and install the latest driver from the **AJA** or **Blackmagic** website (depending on your video device). If you use an AJA device with a driver which is older than version 10.3, make sure to download and install the NDD version.

2 Installation: Open the **just:play 1.7 installer** and click **Continue**. Once you come to the custom install window make sure that all options are selected like shown in this screenshot.



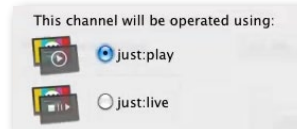
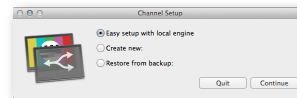
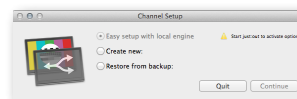
3 Configuration: Open the folder **Just Play** in your Applications folder and start **just:out**. It will automatically display its preferences window. Configure the following settings. **Video Output Component:** To use the monitor connected to the graphics card of your Mac select "Screen". If you want to use the installed video card use "AJA" or "Blackmagic DeckLink". **Video Display Mode:** Select the resolution, frame rate and either 8-bit (for video only playout) or RGBA (for playout of video and realtime graphics) as well as the audio output in the audio tab. Click **OK** to save the preferences and then quit **just:out**.



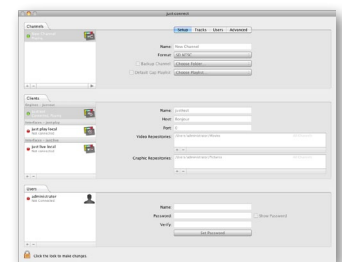
4 Start just:out again: Go to the **Window** menu and select **Preview** (not available when using 8-bit mode). This window stays in front and shows the output coming from the engine. The ToolsOnAir watermark will disappear once the engine is activated.



5 Start just:connect: Select **Easy setup with local engine**. If this option is grayed out please start again with point 4.



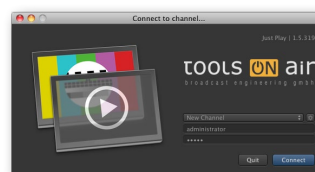
Click **Continue**. This will show a dialog asking which **type of channel** you'd like to use. Select **just:play**. Click the **Continue** button, then **just:connect** will open like shown. Check if there is a green light in front of the **New Channel** which indicates that the channel has been properly started.



6 Diagnostics Window of just:out: To verify that the channel is working properly, you can go back to **just:out** and select **Diagnostics** in the **Window** menu. In the Diagnostics window you should see a **green bar**, which represents the **video buffer**. If the bar is grey, delete the channel from **just:connect**, then close all apps and start again with point 4!



7 Start just:play: Select **New Channel**. Click the **Connect** button to connect to the channel.



8 Please **read the user's handbook** for more information on how to build a playlist. You can find the user's handbook under the **Help** menu of **just:play**.

For support visit our online helpdesk system <http://support.toolsonair.com/>