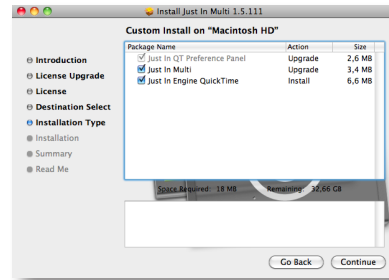
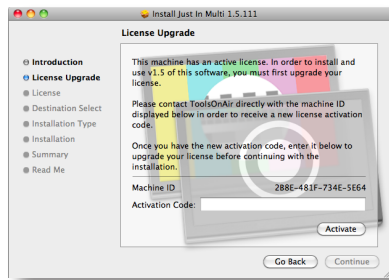


JUST:IN MULTI GETTING STARTED

1 **Install your video card driver of choice.** For **Blackmagic:** Use the latest driver from the Blackmagic website. For **AJA:** Use the latest ⁽¹⁾ NDD driver corresponding to the AJA card you are going to use and download it from the AJA website. For **Matrox:** Use the latest Matrox Multi-Ingest or Multi-I/O drivers from the Matrox website.

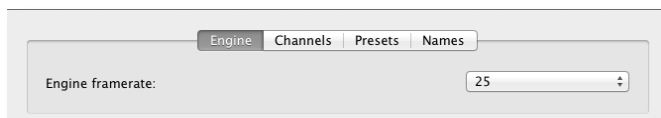


2 **Installation.** Double click on the **Just In Multi 1.6** installer and click **Continue**.

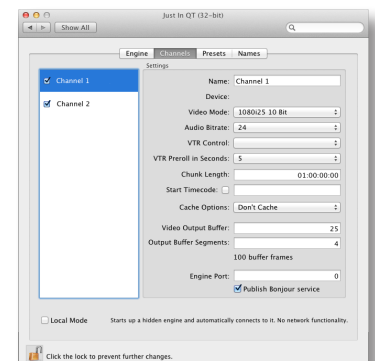
- Please note: In case of a **previous activation** of any version prior to v1.5 or v1.6 you will need to enter a **new activation code**. Please contact ToolsOnAir to receive your updated activation code. If you used a non activated demo of **Just In Multi** please disregard step 3 and proceed directly to step 4.
- In the custom install window make sure that **all options are selected** as shown in the screenshot and click **Continue**, and followed by **Install** on the next screen. In order to complete the installation click on **Close** on the last screen.

3 **Configuration.** Open the System Preferences and select the **Just In QT** preference pane under **Other**. Before you can continue please **authenticate** yourself by clicking on the **lock icon** and entering the administrative credentials. In the **Just In QT** preference pane you will see five tabs:

- Under **Engine** select the desired framerate (23.976, 24, 25, 29.97, 30, 50, 59.94 or 60). For all other options, please consult the manual.



- Under **Channels** select the available channels that you would like to use by clicking on the appropriate checkbox and select the appropriate settings for the channel. The available video mode settings for the selected framerate will be displayed automatically. The last settings of this tab are relevant to the network discovery.

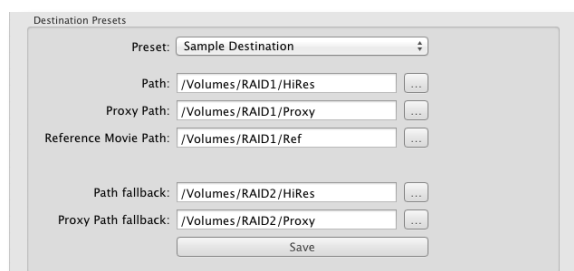


- The option **Publish Bonjour service** is checked by default. In case that Bonjour cannot be routed in your network, check **Local Mode** to run a network agnostic version. Please consult the manual for further information on how to run **just:in** by using ports and dedicated IP Addresses per channel.

4 Under **Presets** create a new capture preset (PAL, NTSC or HD) and a destination preset.

■ A **capture preset** consists of the following options: **Timecode Source**, **TV Norm**, **Container**, **Aspect Ratio**, **Codec** and **Audio Channels** (Mono or Stereo). Once you have defined your preset of choice click **Save** and enter a descriptive name for it. Make sure that you save this preset into **/Library/Application Support/ToolsOnAir/JustIn**.

■ A **destination preset** consists of the following options: **Path**, **Proxy Path**, **Path fallback**, **Proxy Path fallback**. Once you have defined your destinations of choice click **Save** and enter a descriptive name for it. Make sure that you save this preset into **/Library/Application Support/ToolsOnAir/JustIn**.

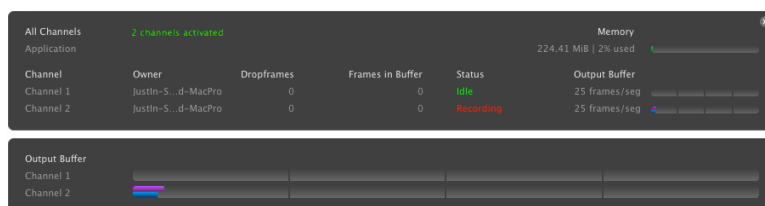


5 Under **Names** you can define the naming conventions of your clips. You can add your own variables by entering “%” followed by the wanted naming expression. The clips will be named accordingly.

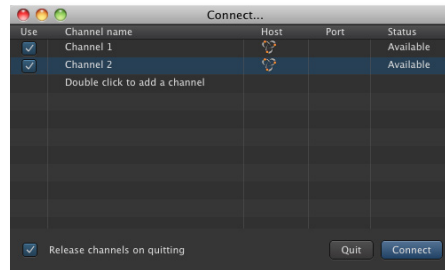
6 To Activate **just:in** multi you need to start the **Tools On Air** preference pane, select the **just:in Activation** tab and enter an activation key either for demo (without watermarks) or permanent use in the **Activation code** field. Please contact ToolsOnAir to get an activation code. Note that **Just In Multi** will also work in full-featured mode without an activation key. You will then see a logo watermark every four seconds. Information about activated vs. trial mode is displayed in both **Just In Engine Quicktime** and **Just In Multi**.



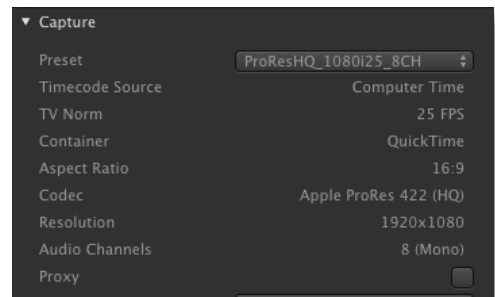
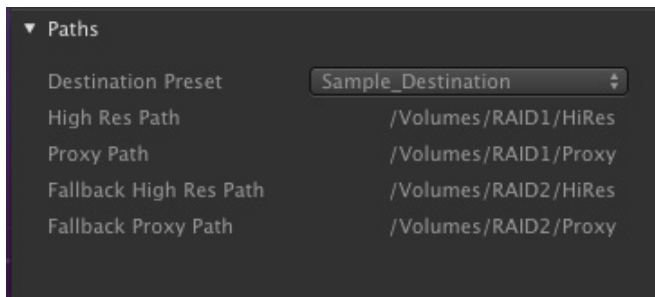
7 Using **just:in**: Navigate to **/Applications/Just In** and double-click on **Just In Engine Quicktime**. The engine application will start up and show information about each channel.



8 Start **Just In Multi** (same location as the engine) and select the **channel** you wish to control and record on. Activate **Release channels on quitting** if you want that **Just In Multi** releases the selected channels upon quitting the GUI. Press **Connect** to open the user interface. If you selected **Local Mode**, you only need to start **Just In Multi**.



9 You are now ready to proceed with your **first recording**. Select the appropriate **capture** and **destination presets**, then press the **Record** button. You will now be recording in **Crash mode**.



For further information especially with regard to the installation/deployment of Apple's professional codecs, please consult the user manual.

You can access it under the **Help** menu of **Just In Multi**.

(1) = AJA NDD drivers and **just:in** 1.6 compatibility (due to AJA SDK changes):

- **Versions 8.1.x and 9.0.x = up and until just:in version 1.5.165.**
- **Versions 9.1 and 10.0.x = from just:in version 1.5.174.**
- **Versions 10.1 and 10.3.1 = from just:in version 1.5.176 on including v.1.6.185**
- **Versions 10.3.2 and 10.3.3 = from just:in version 1.6.186 on.**
- **Versions 10.4.x = from just:in version 1.6.188 on.**

Information contained in this document is provided without liability for information purposes only and is subject to change without notice.

v1.10– © 2013 ToolsOnAir - Broadcast Engineering GmbH. All trademarks and registered trademarks are the property of their respective owners.